

SOUNDSCAPES Acoustical Blades

General Installation Instructions

DO NOT REMOVE PANELS FROM THE CARTON UNTIL YOU HAVE READ THESE INSTRUCTIONS IN THEIR ENTIRETY. LOCATE HARDWARE ACCESSORY KITS THAT SHIPPED SEPARATELY.

1.0 GENERAL

1.1 Product Description

Soundscapes Blades Acoustical Baffles are flat or curved fiberglass panels designed to be installed individually or in groups.

Nominal size are 200mm x 1200mm, 200mm x 1600mm, 400mm x 1200mm, 400mm x 1600mm, 400mm x 1800mm, 500mm x 1200mm, 500mm x 1600mm. The thickness of the product is 40mm.

Soundscapes Blades are designed to be suspended with Armstrong accessory kits installed in accordance with these installation instructions. Soundscapes Blades is packed with factory fitted insert hook other accessories has to be purchased separately.

1.2 Materials & Finishes

Soundscapes Blades panels are made from fiberglass and finished on all sides with DuraBrite Acoustically transparent membrane. The top of the blade has a female threaded insert for use with the preferred Armstrong suspension systems.

There are eight standard color options for the finished panels. Field painting of white panels is not recommended. Field painting will void the product warranty.

1.3 WORKING WITH FIBERGLASS PRODUCTS MAN-MADE VITREOUS FIBER CEILING PANELS

▲ WARNING- THIS PRODUCT CONTAINS MAN-MADE VITREOUS FIBERS. POSSIBLE CANCER AND RESPIRATORY TRACT HAZARDS. CAN CAUSE TEMPORARY RESPIRATORY, SKIN AND EYE IRRITATION.

1.3.1 PRECAUTIONARY MEASURES: During the installation be certain that the work site is well ventilated and avoid breathing dust. If high dust levels are anticipated during

installation such as with the use of power tools, use Appropriate NIOSH designated dust respirator. All power cutting tools must be equipped with dust collectors. Avoid contact with skin or eyes. Wear long-sleeve, loose fitting clothes, gloves and eye protection.

1.3.2. First Aid Measures: If contact occurs flush eyes and skin irritation with plenty of water for at least 15 minutes and remove contaminated clothing. After installing material. Wash with warm water and mild soap. Wash work clothes separately from other clothing.

Rinse washer thoroughly. Refer to Armstrong MSDS (which includes information on established occupational exposure limits) which are available from Armstrong or your employer.

1.4 Storage and Handling

The blades shall be stored in a dry interior location and shall remain in original cartons prior to Installation to avoid damage. The cartons shall be stored in a flat, horizontal position. Save the cartoon cardboard insert for potential use during installation as a guide for hanging the panels. The panels should not be removed from their carton until the suspension system is ready. Proper care should be taken when handling panels to avoid damage and soiling, particularly with panel edges and the surface of color panels. Proper care should be taken to locate the hardware accessory kits shipped separately form the panels.

1.5 Temperature During Installation

The Product can be installed where the temperature is between (4°C) and (49°C). It Cannot be used in exterior applications, where standing water is present, or where moisture will come in direct contact will the panel.

1.6 Fire Performance

Soundscapes Blades, as with other architectural features located in the ceiling plane, may obstruct or skew the existing or planned fire sprinkler water distribution pattern, or possibly delay the activation of the fire sprinkler or fire detection system.

Designers and installers are advised to consult a fire protection engineer, NFPA 13, and their local codes for guidance on the proper installation techniques where fire detection or suppression systems are present.

2.0 COMPONENTS

2.1 BLADES SHAPES/SIZES

Blades come in 7 different sizes with 40mm thickness. See data page for exact product dimensions. Blades are flat but may exhibit some natural deflection based on installation details. Blades are factory fitted with female threaded insert on two ends.

3.0 INSTALLATION

3.1 GENERAL

Before opening the panel carton, be sure to locate the hardware accessory kits needed for installation that were shipped separately.

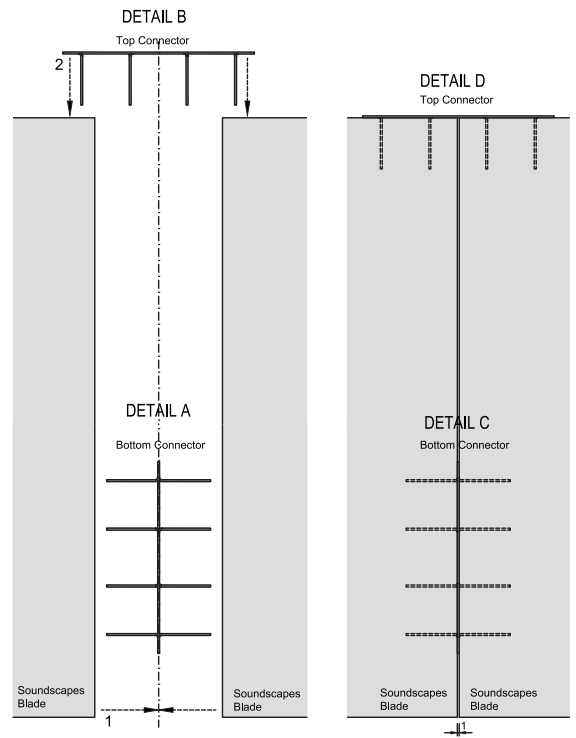
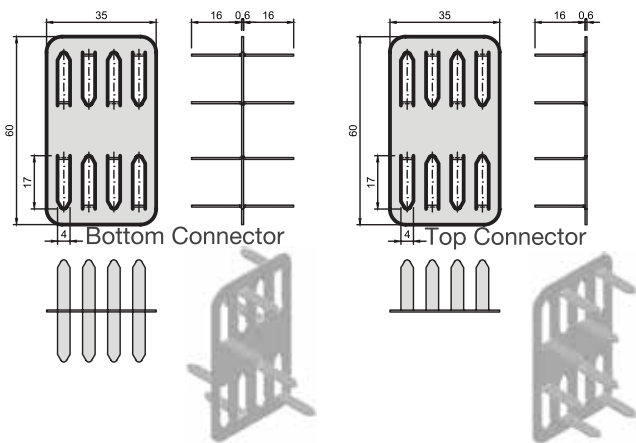
Soundscapes Blades may require two people to align and install each panel safely.

DO NOT REMOVE THE PANELS FROM THEIR CARTOON until the appropriate suspension system method has been prepared and is ready to accept the panels for installation. Blades cannot be used to support any other material. The suspension system chosen must be fastened to the structure and cannot be hung from any commercial ceiling system. Soundscapes Blades are not approved for exterior application.

3.2 SUSPENSION SYSTEM

Following types of suspension options available for use with Soundscapes Blades.

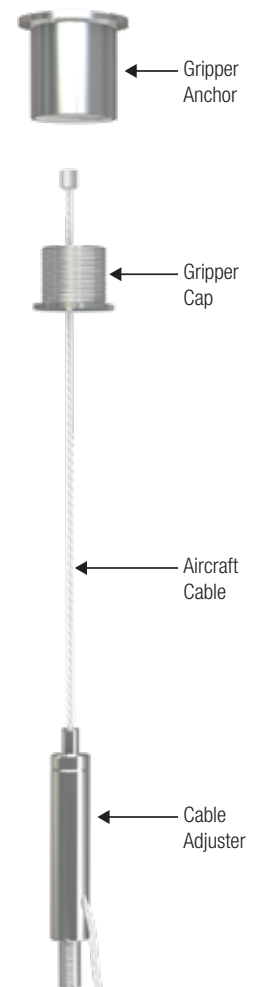
Note: Suspension items need to be ordered separately.



3.2.1 SUSPENDING SINGLE BLADES FROM DECK TOP CONNECTOR

ASSEMBLED DETAIL

BP5450
4 items/kit



Soundscapes Blades can be independently suspended using (BPCS5135) Deck Hanging kit (BP5450)

1. When you are installing an individual Soundscapes Blades, you hang two cables from the structure which should align with the corresponding position on the Soundscapes Blades. To taken the cable connectors to the structure, use fastens by others that are compatible with the structure. This Part of the installation will utilize the gripper structure Anchor and cap from the Deck Hanging kit (BP5450).
2. The Cables is to be attached to the female threaded insert of the individual panel at two locations using the cable adjusters Supplied in the Deck Hanging kit. (Note: In an individual panel suspension, you will not use the nuts & washes also supplied in that fit. There are for group hanging applications.)
3. Screw the cable connections into the threaded holes at two locations in the Soundscapes Blades and configure the cable and connectors as shown. The height of the Soundscapes Blades can be adjusted at the bottom end cable adjuster. When a final height is determined and installation is complete, cut off the excess cable using not needed from where it comes out of the side of the adjuster after the Soundscapes Blades are properly levelled.

In case where Blades needs to be jointed use bottom connector, insert it on one side of the blade and press it into the other blade as shown in detail A. Then insert Top Connector on the top of the Blades has shown in detail B. Post insertion, of Bottom Connector will be placed as shown in detail C and Top connector will joint two blades as shown in detail D.

4.0 Cleaning

Use a clean, dry, soft white cloth to wipe off any dirt of finger prints. Regular light dusting of the top side of the Baffle is recommended.

Note: A 2440mm aircraft cable length is included in the standard Deck Hanging kit. If additional cable length is needed for high ceiling applications, order the additional accessory kit.

Knauf Ceiling Solutions (India) Private Limited

Boomerang, A-304, Chandivali Farm Road (near Chandivali Studio) Andheri (E), Mumbai - 400 072.

Contact us: 1860 266 7080 | e-mail : Helpdeskindia@knaufarmstrong.com